

# THE TIMBERVILLE 4

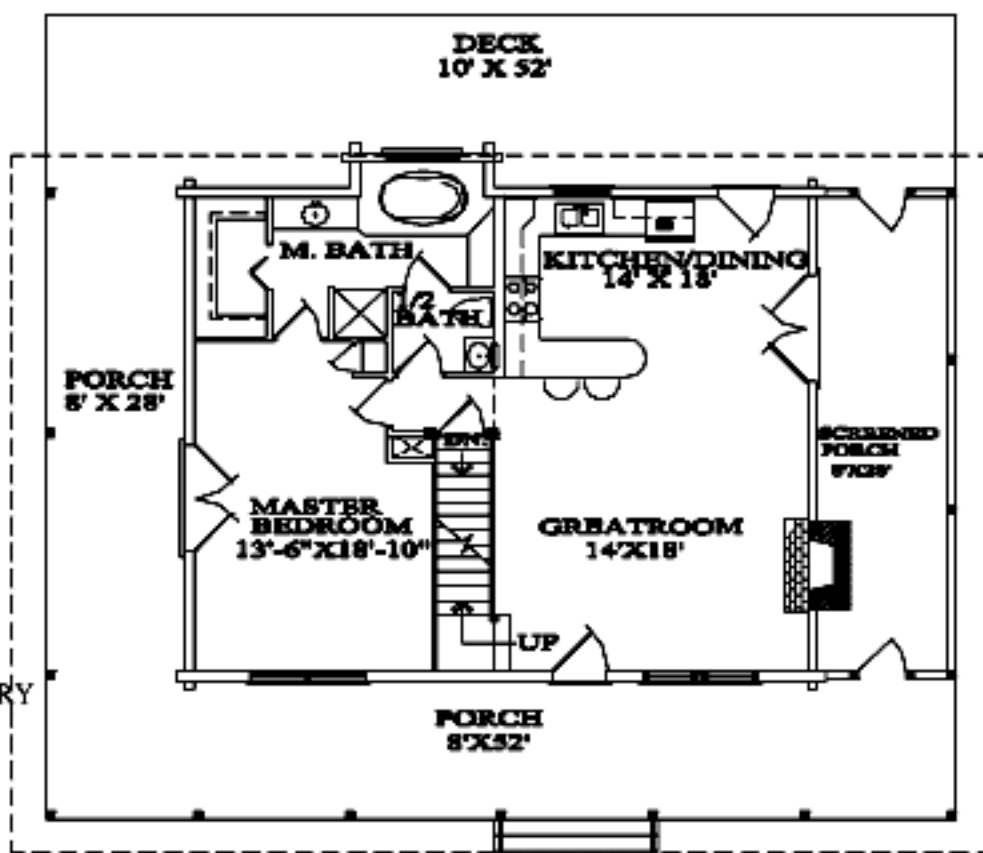
## PLAN AMENITIES:

THE MAIN FLOOR PLAN HAS A MASTER BEDROOM WITH LARGE MASTER BATH (POWDER FOR GUESTS), THE KITCHEN/ DINING AREA IS OPEN TO THE SPACIOUS GREATROOM THAT'S OPEN TO THE LOFT ABOVE.

THE LOFT AREA HAS A LARGE BEDROOM WITH BATH, ALSO AN OPEN LOFT OR OFFICE SPACE THAT OVERLOOKS THE GREATROOM BELOW.

THE BASEMENT PLAN SHOWN HAS AN OPTIONAL GARAGE, A LARGE UTILITY-MECHANICAL-LAUNDRY COMBINATION AND VERY LARGE RECREATION AREA!!

WE CAN HAVE THE BUILDING DOCUMENTS MODIFIED TO SUIT YOUR NEEDS!

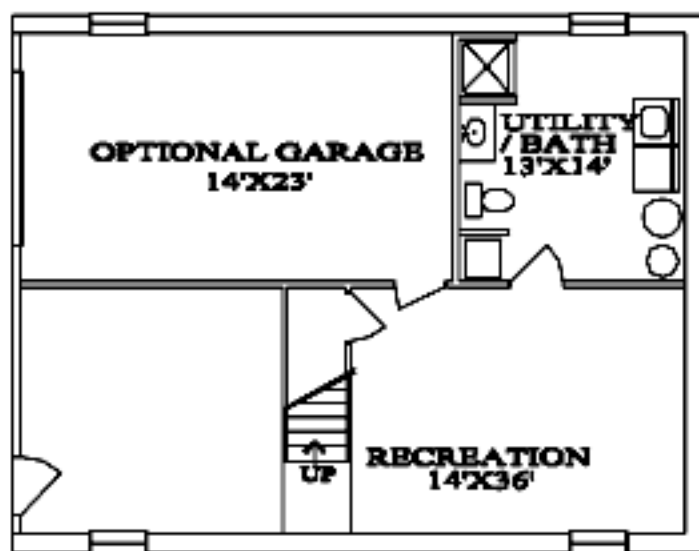


**MAIN FLOOR PLAN**

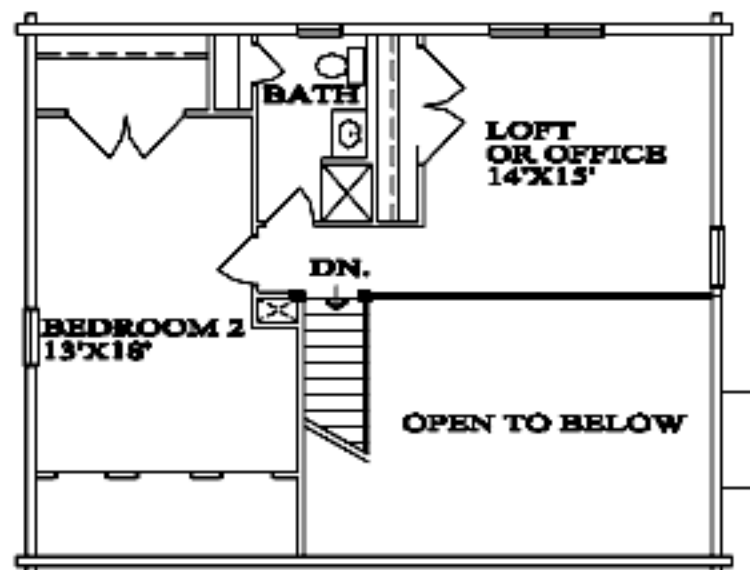
## SQUARE FOOTAGE:

1008 SQ. FT. @ MAIN LEVEL  
 756 SQ. FT. @ UPPER LEVEL  
 686 SQ. FT. @ BASEMENT LEVEL  
 2450 SQ. FT. OF TOTAL LIVING AREA

640 SQ. FT. OF OPTIONAL PORCH  
 224 SQ. FT. OF OPTIONAL SCREEN PORCH  
 520 SQ. FT. OF OPTIONAL DECK  
 322 SQ. FT. OF OPTIONAL GARAGE



**BASEMENT PLAN**



**UPPER LEVEL PLAN**